



ge.com/grid

ELECTROMECHANICAL RELAY CASE DIMENSIONS



SYSTEM CONTROLS & SWITCHGEARS



Online Solutions for Electrical Needs



Overview

System controls & switchgears is one of the fastest growing companies in India. Established in 1983, a privately owned company has unrivalled experience in the distribution of electrical products. SCS business covers a broad range of Medium Voltage Switchgears, Low Voltage Switchgears, Power Capacitors, Internal wiring accessories, Lighting, Metal Detectors, Energy Management Products and other products. Over the last 3 decades history, we've developed strong relationships with customers. Our strength lives in all of our people, who have extended our tradition of service and integrity to customers in every location and situation, and who take pride in making us one of the most resilient resources in the products we deal.

ELECTROMECHANICAL RELAY CASE DIMENSIONS



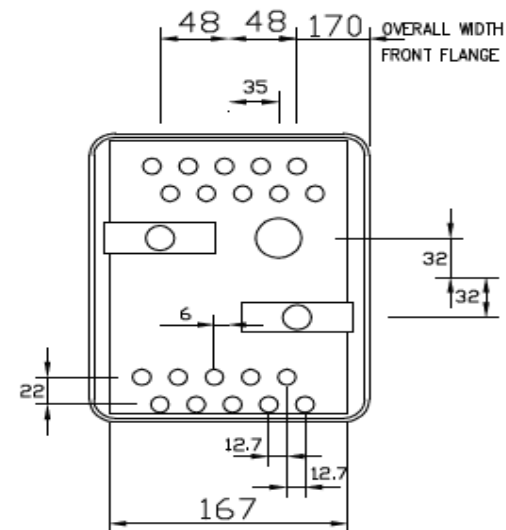
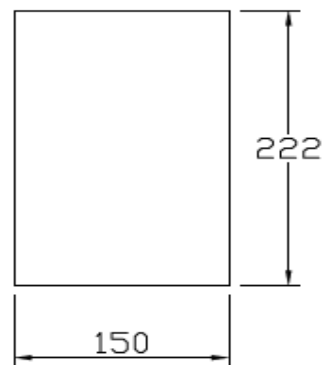
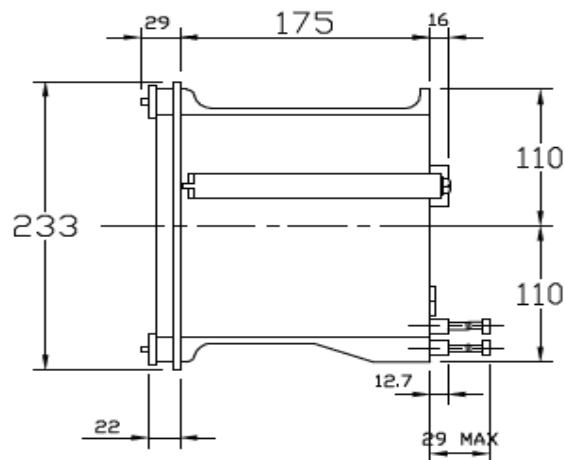
S.No.	Relay Type	Case	Case size	Maximum overall dimensions		
				Height	Width	Depth*
1	CDG11	AF	1D Vert 10T	233 mm	170 mm	203 mm
2	CDG31	EG	3D Horz	233 mm	454 mm	203 mm
3	CDG61	EG	3D Horz	233 mm	454 mm	203 mm
4	CAG12	AF	1D Vert 10T	233 mm	170 mm	203 mm
		ZF	1/2 NV 12T	153 mm	124 mm	130 mm
5	CTUM15	AF	1D Vert 10T	233 mm	170 mm	203 mm
		ZG	1/2 H 12T	153 mm	124 mm	130 mm
6	CAEM33	AF	1D Vert 10T	233 mm	170 mm	203 mm
7	CAG14	AF	1D Vert 10T	233 mm	170 mm	203 mm
8	CAG34	AF	1D Vert 10T	233 mm	170 mm	203 mm
9	VDG11	AF	1D Vert 10T	233 mm	170 mm	203 mm
10	VDG13	AF	1D Vert 10T	233 mm	170 mm	203 mm
11	VDG14	AF	1D Vert 10T	233 mm	170 mm	203 mm
12	VAG11	YF	1/4N V 10T	118 mm	105 mm	115 mm
13	VAG21	ZG	1/2 NV 12T	153 mm	124 mm	130 mm
14	VAJH13	YF	1/4N V 10T	118 mm	105 mm	115 mm
15	VAJH23	ZG	1/2N H 20T	124 mm	153 mm	130 mm

ELECTROMECHANICAL RELAY CASE DIMENSIONS



16	VAJHM13	YF	1/4N Horz 15T	118 mm	105 mm	120 mm
17	VAJHM23	ZG	1/2N H 20T	124 mm	153 mm	130 mm
18	VAA11	YF	1/4N V 10T	118 mm	105 mm	115 mm
19	VAA12	YF	1/4N V 10T	118 mm	105 mm	115 mm
20	VAA13	YF	1/4N V 10T	118 mm	105 mm	115 mm
21	VAA21	YF	1/4N V 10T	118 mm	105 mm	115 mm
		ZG	1/2N H 20T	124 mm	153 mm	130 mm
22	VAA22	YF	1/4N V 10T	118 mm	105 mm	115 mm
		ZG	1/2N H 20T	124 mm	153 mm	130 mm
23	VAA23	YF	1/4N V 10T	118 mm	105 mm	115 mm
		ZG	1/2N H 20T	124 mm	153 mm	130 mm
24	VAA31	ZG	1/2N H 20T	124 mm	153 mm	130 mm
25	VAA32	ZG	1/2N H 20T	124 mm	153 mm	130 mm
26	VAA33	ZG	1/2N H 20T	124 mm	153 mm	130 mm
27	VAX31	ZG	1/2N H 20T	124 mm	153 mm	130 mm
28	Case Size 2,3,4,6 Hinged Armature MIDOS) RELAY					

Case and Panel cut-out dimensions for case
1D Vert 10T (all dimensions in mm)

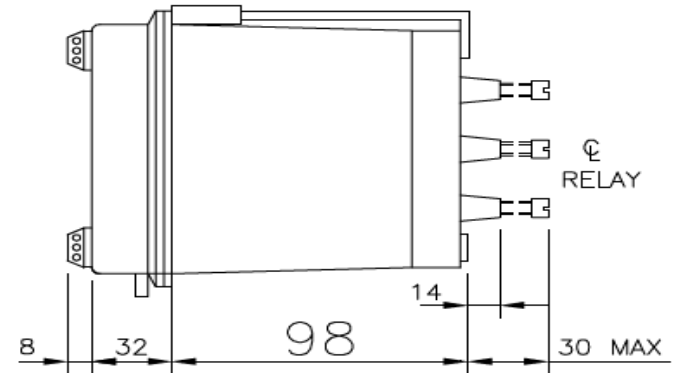
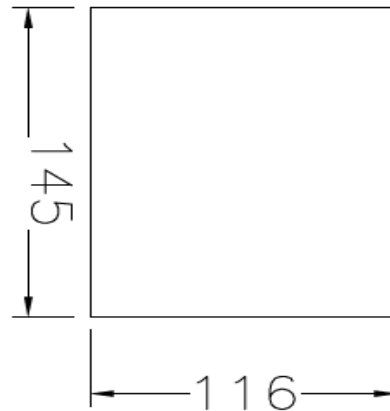
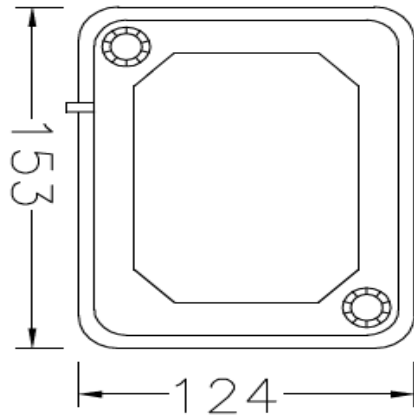


Case size	Maximum overall dimensions		
	Height mm	Width mm	Depth* mm
1D Vert.	233	170	203

ELECTROMECHANICAL RELAY CASE DIMENSIONS

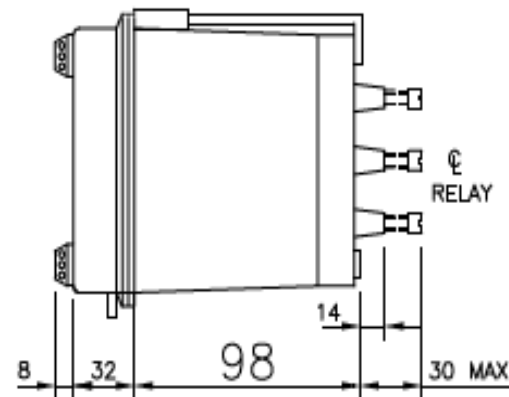
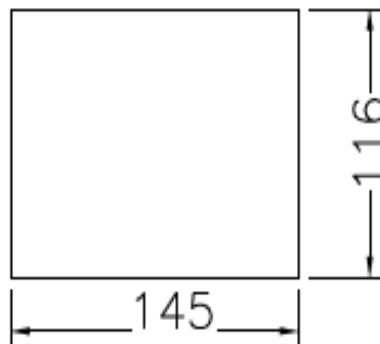
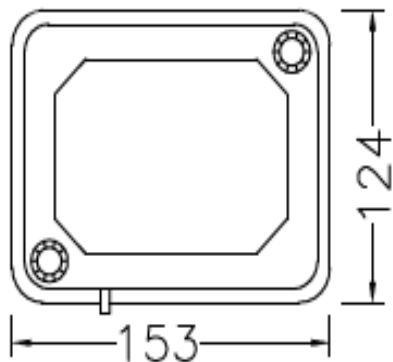


Case and panel cut -out dimensions for case
1/2 N VERT. 12T (All dimensions in mm)



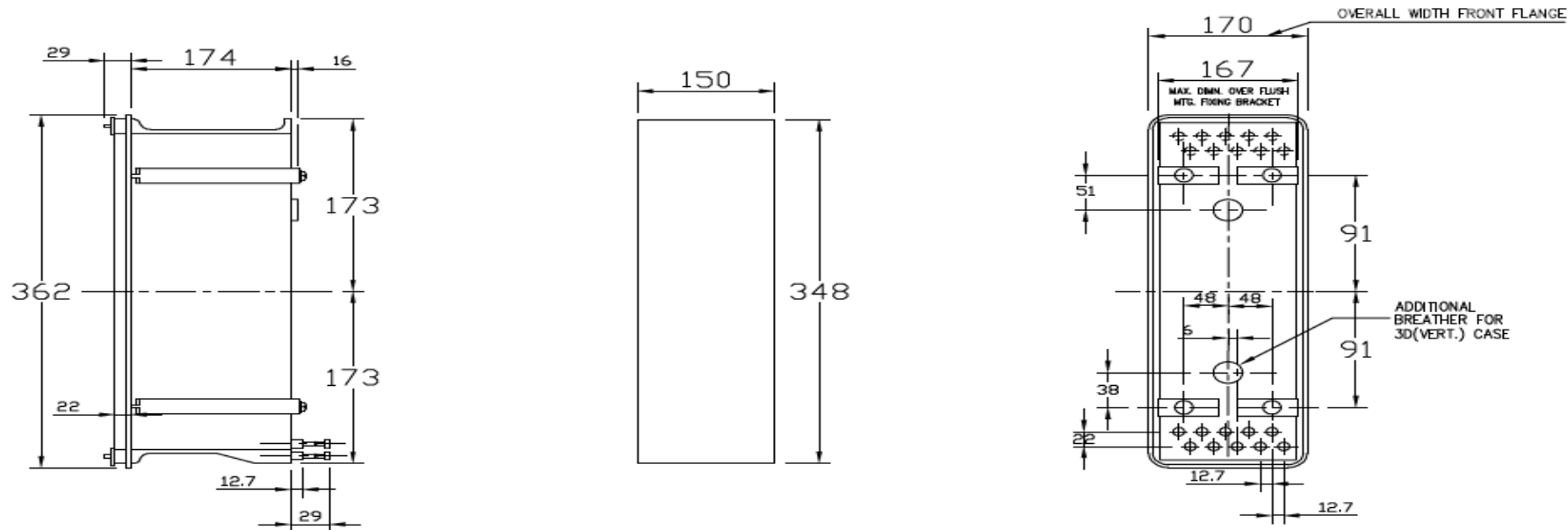
Case size	Maximum overall dimensions		
	Height mm	Width mm	Depth* mm
1/2N Vert.	153	124	130

Case and panel cut -out dimensions for case
1/2N H 20T (All dimensions in mm)



Case Size	Maximum overall dimensions		
	Height mm	Width mm	Depth* mm
$\frac{1}{2}$ N Hor.	124	153	130

Case and panel cut-out dimensions for case 1 1/2 D (All dimensions in mm)



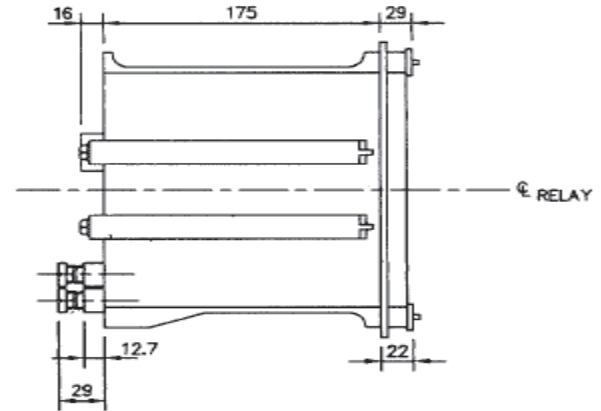
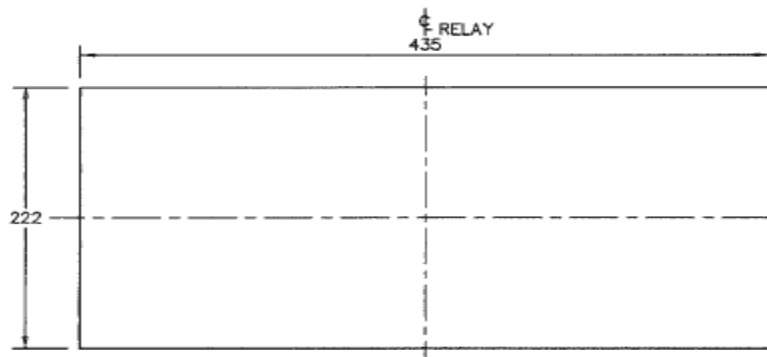
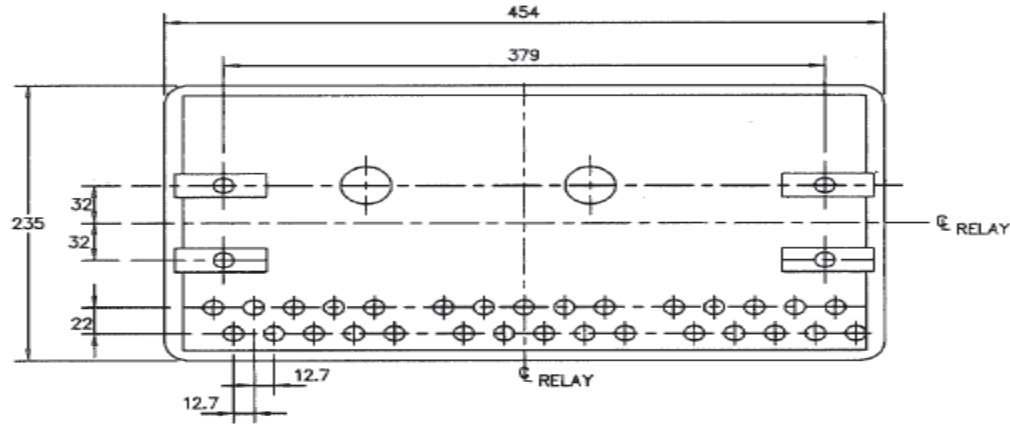
Case	Height	Width	Depth*
1½D	362 mm	170 mm	203 mm

*Add 76 mm for maximum length of terminal studs, alternatively, 29 mm for terminal screws.

ELECTROMECHANICAL RELAY CASE DIMENSIONS



Case and panel cut-out dimensions for case
3D hor draw out (all dimensions in mm)



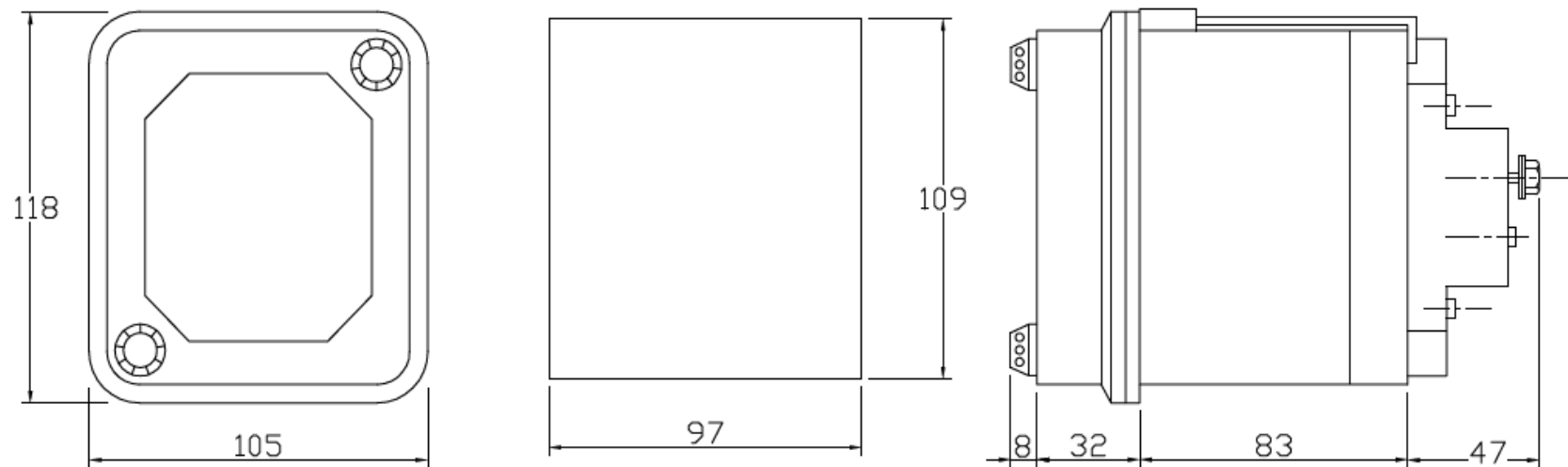
SIZE 3D (HORIZONTAL) SINGLE ENDED CASE

Case size	Maximum overall dimensions		
	Height mm	Width mm	Depth * mm
3D Hor.	233	454	203
3D Vert.	524	170	203

ELECTROMECHANICAL RELAY CASE DIMENSIONS



Case and Panel cut-out dimensions for case 1/4N (all dimensions in mm)



Case Size

**Maximum number of
terminals**

Maximum overall dimensions

1/4N

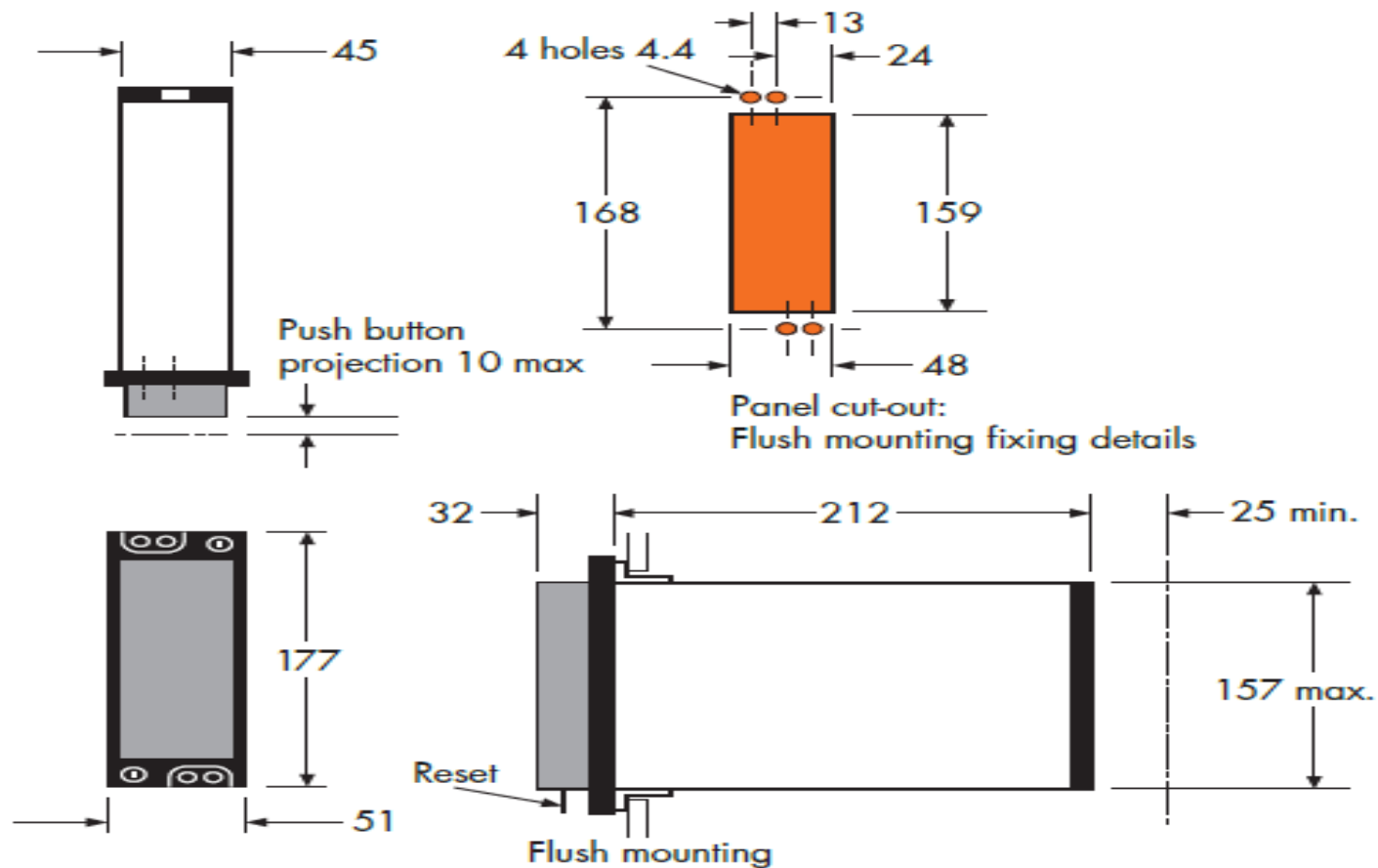
10

118

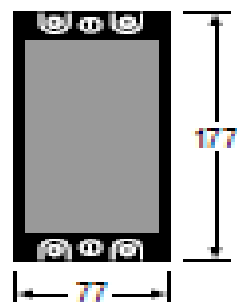
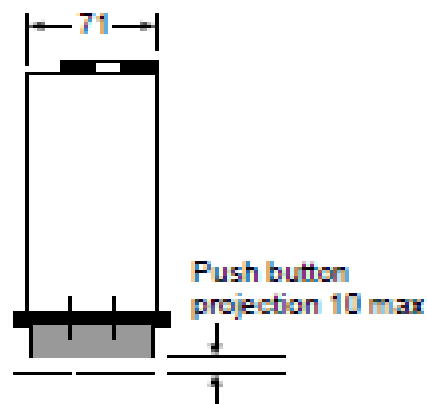
105

120

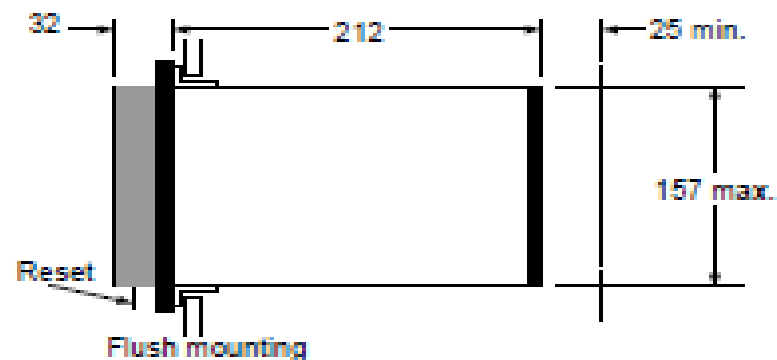
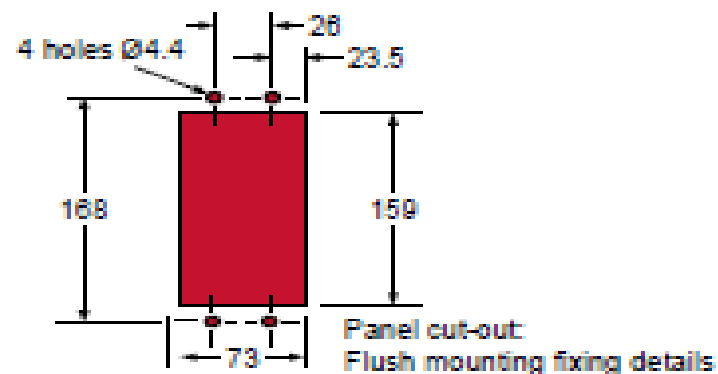
Case Outline Size 2.



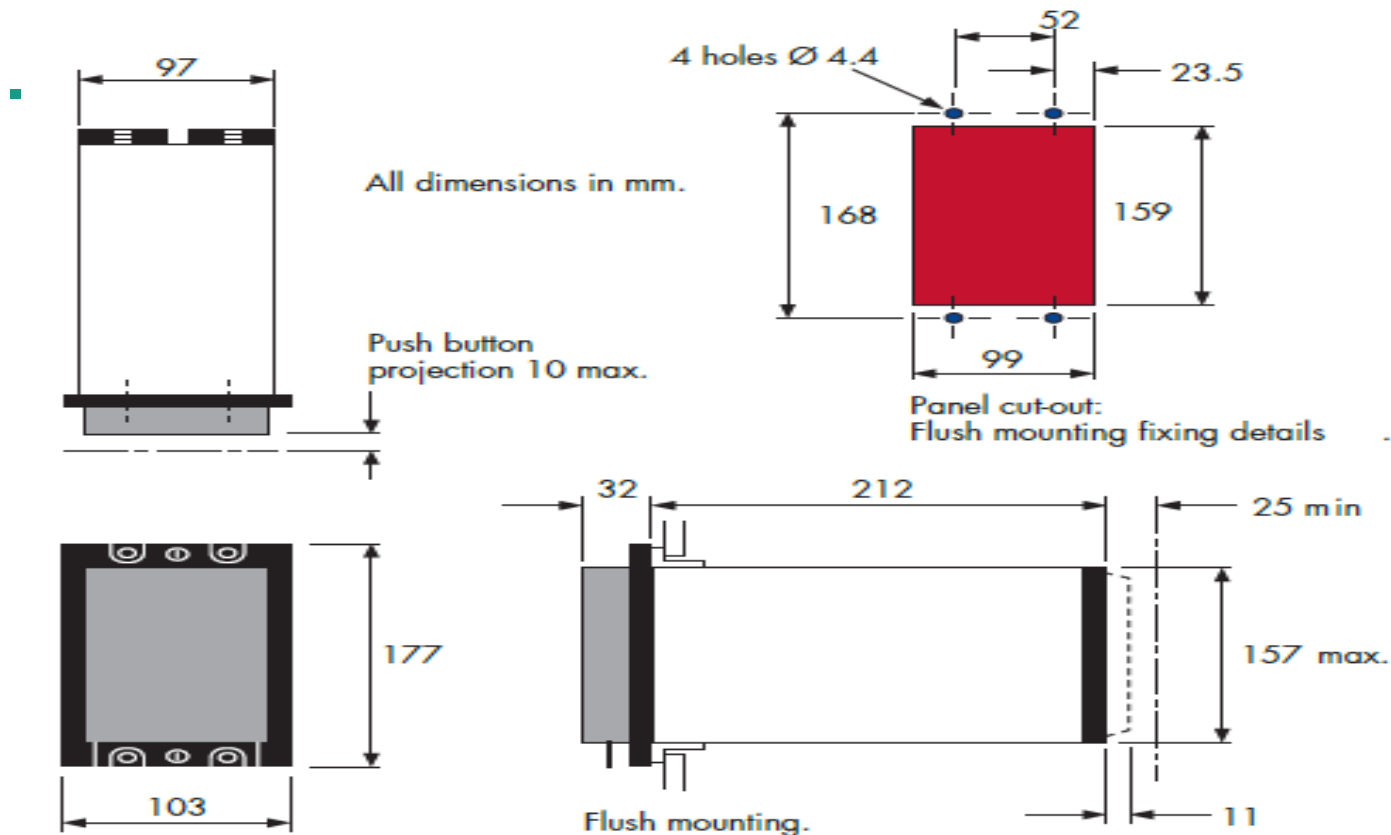
Case Outline Size 3.



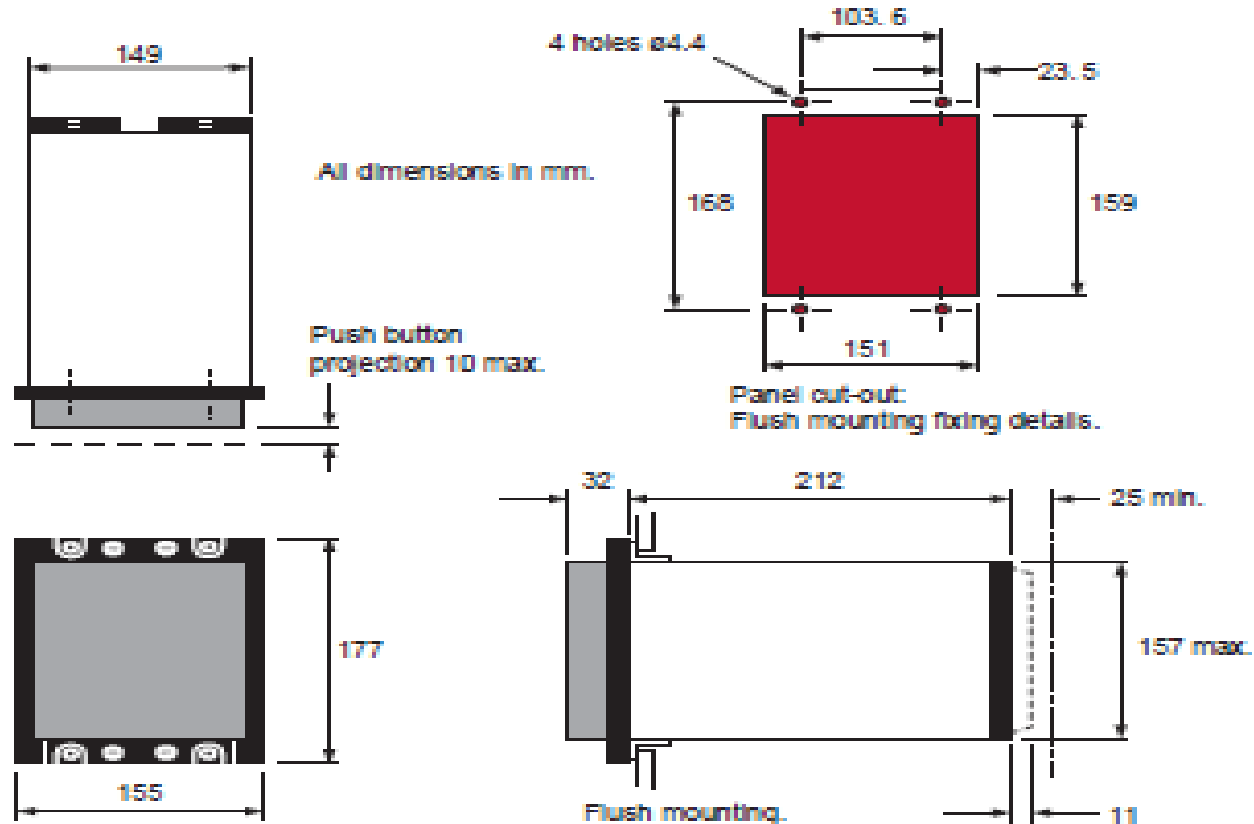
All dimensions in mm



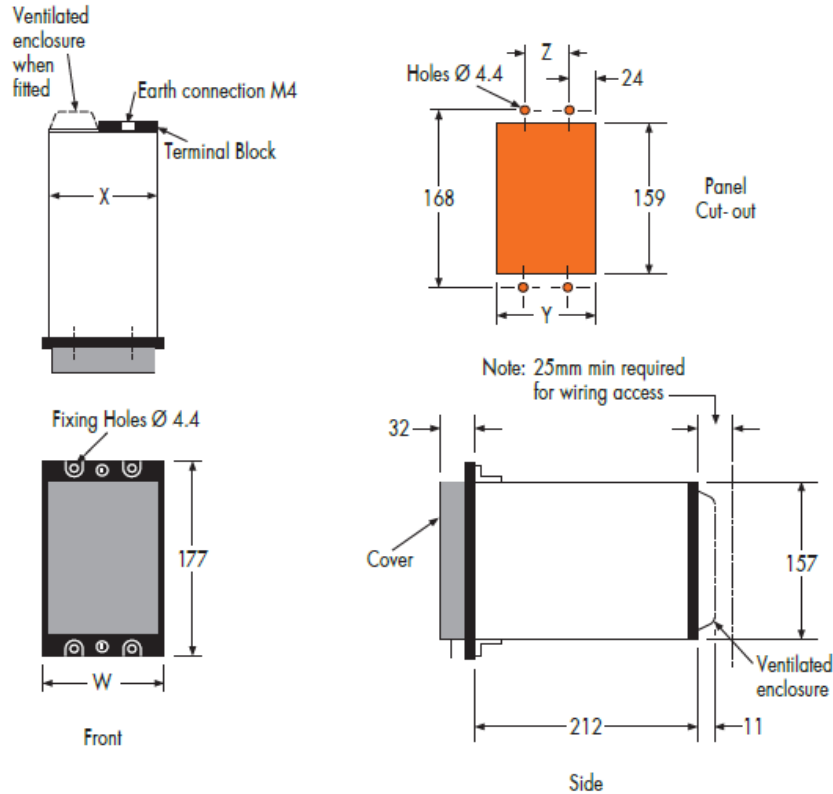
Case Outline Size 4.



Case outline: size 6



ELECTROMECHANICAL RELAY CASE DIMENSIONS



Case Size					
Dimensions in mm	3	4	6	8	16
W	77	103	155	206	414
X	71	97	149	200	408
Y	73	99	151	203	411
Z	26	51.8	103.6	155.4	362.6

Figure: Case and panel cut-out dimensions for relay case sizes 3 to 16

❖ Disclaimer:-

Info given herein is for ease of understanding. Customized tech info is for specific purpose SCS suggests you to take confirmation on technical details from GE experts SCS does not take responsibility or claim this will suit your needs.



SYSTEM CONTROLS & SWITCHGEARS

Office / Stores : Plot No.8,Block No.A,Naraina Industrial Area, Phase-1, New Delhi-28



Sales@systemcontrols.co.in / support@systemcontrols.co.in



Sales :- 011-45631915,45631902,09810009036



Support :- 9717143393



011-45631903

www.systemcontrols.co.in / www.powerfactorshop.com